



## LION CLASSIC

HIGH-SPEED LASER ENGRAVING OF METALS AND PLASTICS

Developed and manufactured by Lion Lasers in the Netherlands

## BENEFITS OF THE LION CLASSIC

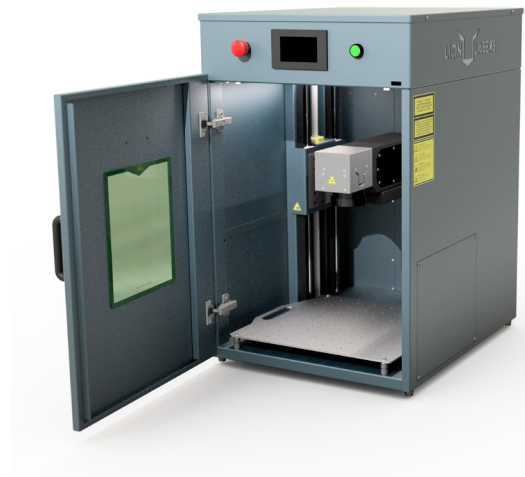
The LionClassic Fiber is a versatile high-speed engraving laser. A fine laser beam enables products to be personalised in seconds. A logo, a minuscule data matrix code or a automatic text are created in no time with the supplied software.

The LionClassic Fiber can be used for almost all **metals** as well as many **plastics**.

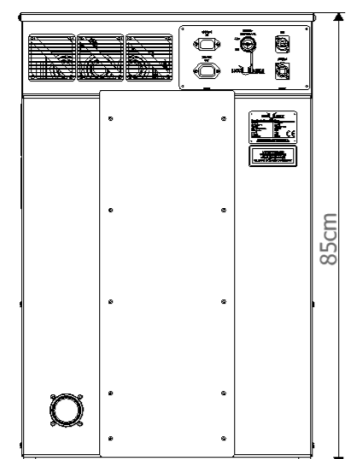
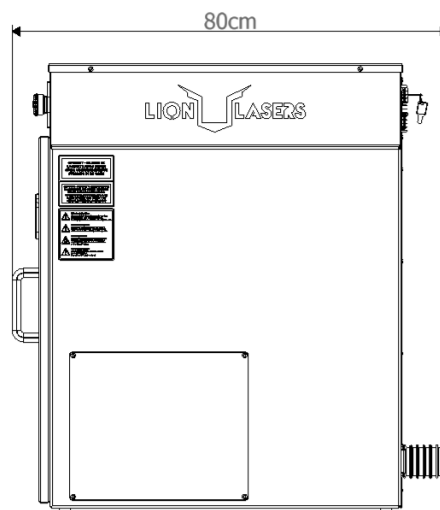
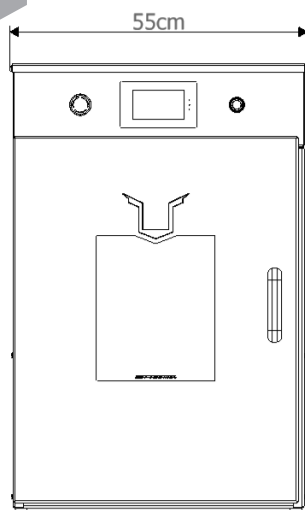
The robust housing with touchscreen has several smart openings to allow for engraving large products. With a choice of different laser sources and many options, Lion Lasers makes this machine suitable for your production process.

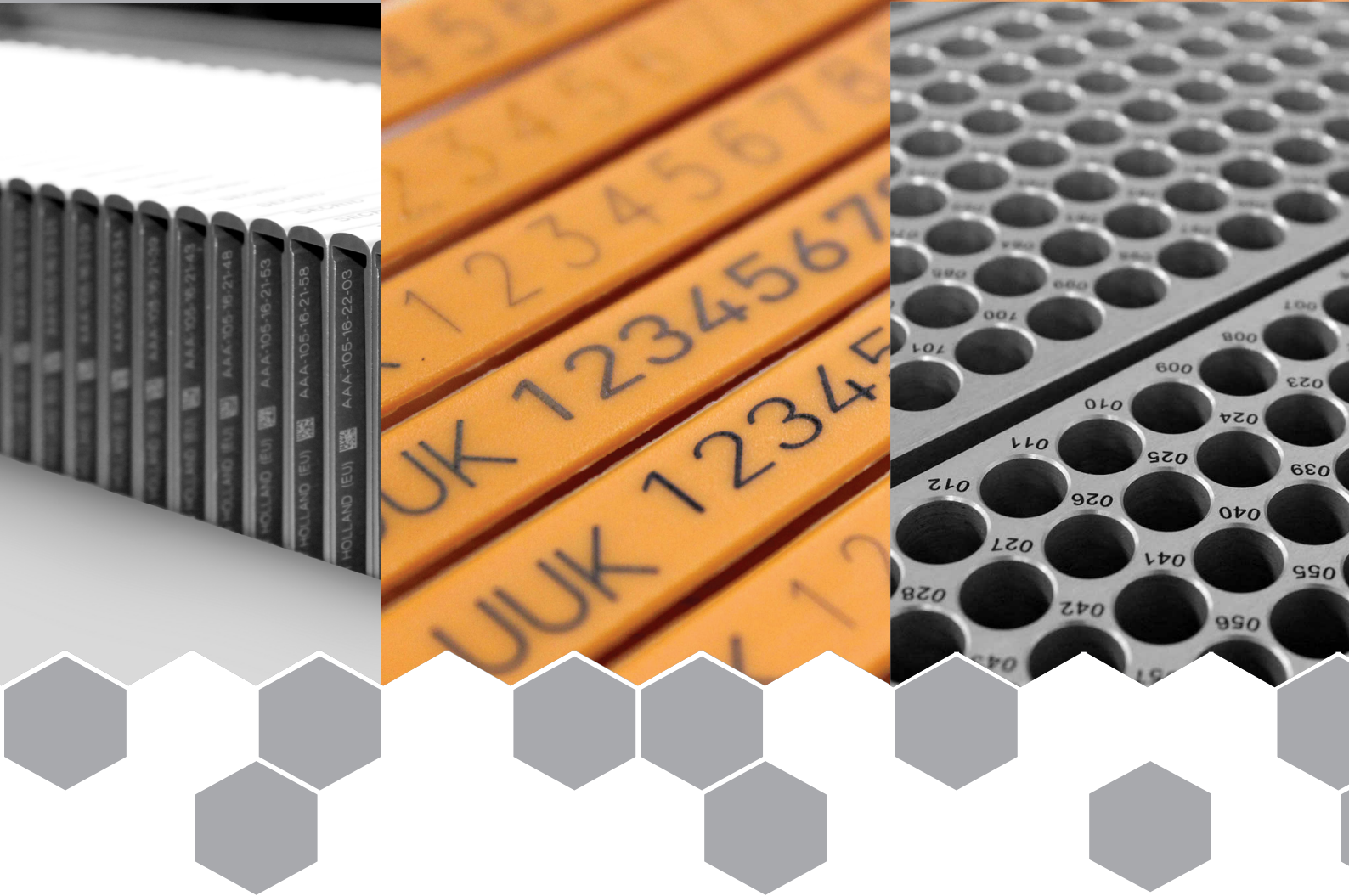
Curious about the possibilities? Get advice and a free product sample.

- ✓ Universal high speed engraving laser
- ✓ Automatic height adjustments
- ✓ User-friendly touch-screen
- ✓ Laser-safe housing
- ✓ Side and bottom product feed possible
- ✓ User-friendly software
- ✓ Various expansion options
- ✓ Designed and built in the Netherlands



## DIMENSIONS LION CLASSIC





## WARRANTY AND SERVICE

At Lion Lasers, we are happy to assist you with fast and professional service.

Lion Lasers offers a 5-year warranty on the Lion Classic, in accordance with the terms and conditions of our general terms and conditions of delivery.

We provide on-site or online training during installation. Even if you prefer training at a different time than the installation, we will take care of everything for you. To keep your machine in good condition, we offer annual maintenance through a maintenance contract.

We offer high-level support both remotely and on-site. If we are unable to help you further by telephone, we will be happy to schedule a visit to your location.

Our laser systems are designed and built in the Netherlands. Our service engineers also build the laser systems themselves, giving them the right knowledge and skills. We are proud of this, as proud as a lion!

We are available during office hours.

### Lion Laser Systems B.V.

Nikkelstraat 47  
4823 AE BREDA  
The Netherlands

Tel. +31(0)765810101  
E-mail [info@lionlasers.nl](mailto:info@lionlasers.nl)  
Web [www.lionlasers.nl](http://www.lionlasers.nl)

Lion Laser Systems B.V. is ISO-9001 certified and a member of the Koninklijke Metaalunie.

koninklijke  
**metaalunie**



## CONFIGURATION

A large number of standard configurations are available for fast delivery.

Work surface	170 x 170 mm (multiple sizes available)				
Model	20W Industrial	30W Industrial	20W Nano	30W Nano	
Laser source	Fiberlaser	Fiberlaser	Fiberlaser	Fiberlaser	
Wavelength	1.064 nm	1.064 nm	1.064 nm	1.064 nm	
Power	20W	30W	20W	30W	
Pulse width	200 ns	200 ns	2 - 500 ns	2 - 500 ns	
Operating	Touchscreen interface and remote control via Ethernet				

Together, we will determine which version is suitable for your application.

## ACCESSORIES



**AIR FILTRATION UNIT**

*Compact industrial filter unit with triple filtration*



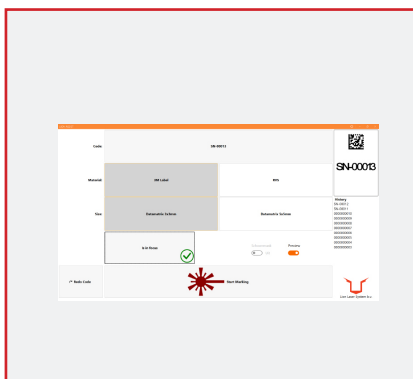
**BASE CABINET**

*Steel, laser-safe cabinet on wheels with electronically secured door and space for an air filter unit*



**AUTOFOCUS**

*In one press in focus*



**LION ASSIST INTERFACE**

*LionAssist interface to make engraving accessible to everyone*



**ROTATION AXIS**

*Rotation axis for automatic circular engraving of products*



**LION TOUCH**

*PC with touchscreen integrated or available separately*